



[www.levinlyhty.fi](http://www.levinlyhty.fi)





# Table of content

27	OUR STORY
29	LOCATION
31	CHALETS
33	SITE PLAN
34	FLOOR PLANS
47	MATERIALS
50	PRICE LIST
51	CONTACT INFORMATION



# Unique Ski-Chalets

Levin Lyhty is a charming complex of four ski chalets. It has a unique atmosphere and is right next to the slopes and the South Point ski lift of the Levi fell. Close to nature, the chalets' location also allows easy access to the various activities and services in the area. The ski slopes can be found right outside the chalets.

Practicality and elegance form the core of the layout and design of the Levin Lyhty apartments. These ski chalets offer you the peace and quiet you need, within easy reach of services. Each apartment includes a parking space with electricity. The larger apartment also includes a spacious storage room, ideal for storing skis or bikes. The apartments of Levin Lyhty are a perfect choice for active holidaymakers, as well as for remote workers seeking some peace and quiet. With tempting prices, investors will be delighted with the growing tourism in Lapland and the Levi region.



The corporate structure of the apartments offers worry-free and cost-effective maintenance in all seasons. You can forget about hassle, as maintenance, taxes, insurance, waste management, and even snow removal are all taken care of by the corporate structure of the apartments.

The architecture is further embellished by timeless finishes and carefully chosen interior solutions that emphasize the connection to the northern nature. All this creates a complex that offers its residents the opportunity to enjoy stunning landscapes in all four seasons, blending in perfectly with its surroundings.

**Levin Lyhty invites you to enjoy the magic of Lapland.**







Levin Lyhty, apartment A3, visualisation sketch



# Location

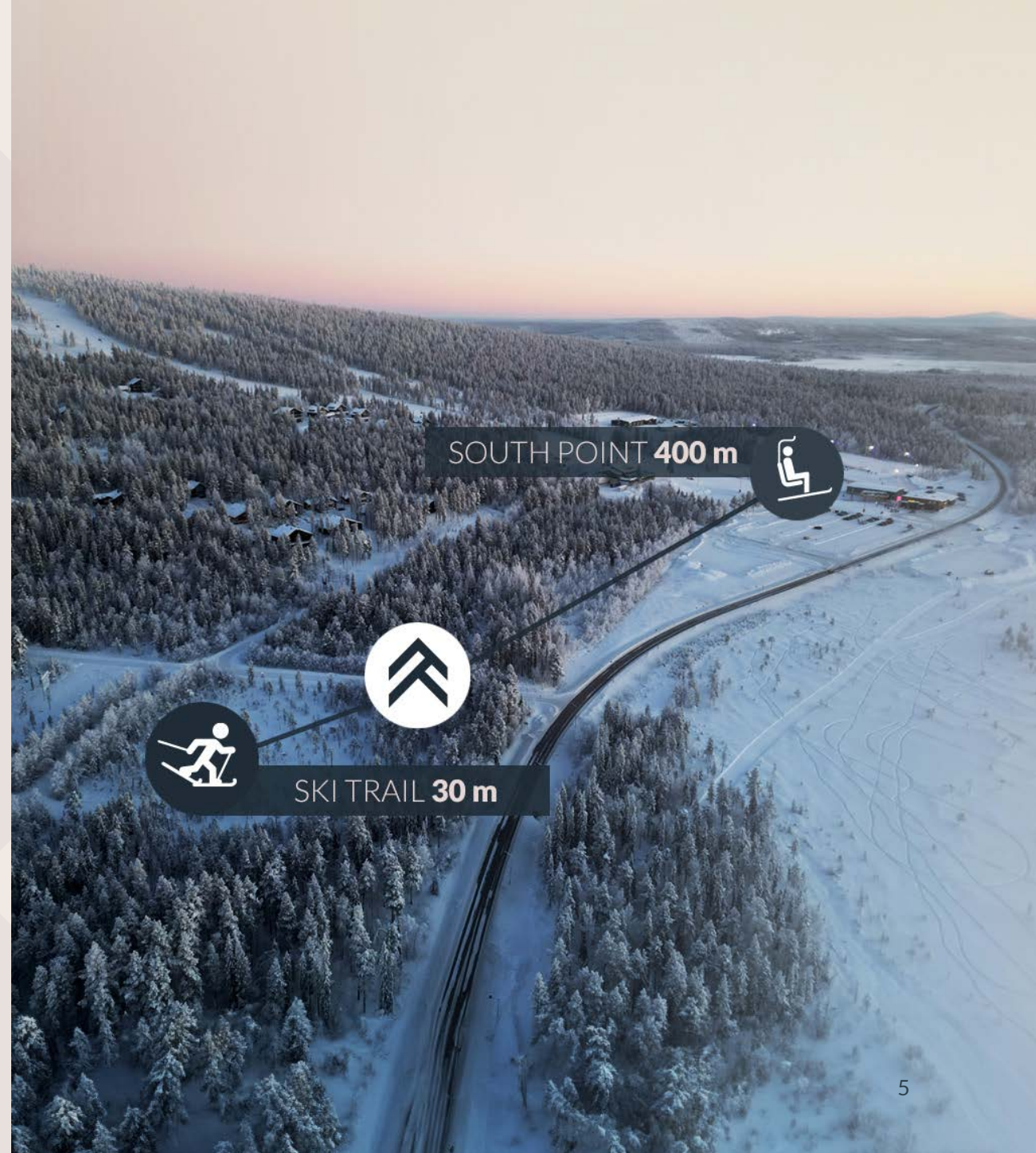
## Hirvenpolku 1, Kittilä

Levin Lyhty is located directly next to the South Slopes of the Levi ski resort, offering an attractive combination of proximity and personal space.

With the magnificent Lapland nature with its ski tracks and ski slopes within easy reach and just a short distance to the supermarket, various restaurants, and other services of central Levi, the location is unrivaled.

Levi boasts various ski slopes fit for beginners, as well as for those looking for a challenge. The nearest ski lift, South Point, is 400 meters away and hosts the family favorite Leevilandia, almost a kilometer long South Park, every park skier's dream.

Cross-country ski trails can be found right next to the Lyhty Chalets.







# Apartments in the ski-chalets

**Welcome to your dreams!** Levin Lyhty offers unique apartments that are perfect for both longer stays and casual holidays. The location is unrivaled, and the stunning architecture ensures interest in these beautiful homes.

The Levin Lyhty housing company is made up of four ski chalets, forming a total of 18 apartments.

There are 16 apartments with an area of 59.1 m<sup>2</sup> each. They have a spacious multifunctional room, which is ideal for storing clothes, skis, or even bikes.

Two bedrooms, two separate toilets, and views in three directions make the apartments comfortable and functional.

Two unique loft apartments are 38.2 m<sup>2</sup> in size. With views in two directions and a staggering amount of space, the lofts are truly compact and functional apartments.

The apartments of Levin Lyhty feature a detailed design combining the traditional northern architecture with modern amenities. High-quality materials and carefully chosen details create a perfect environment for enjoyment and for sharing unforgettable moments with family and friends.

Both apartment sizes are designed with functionality in mind, serving as a modern base for different life situations and needs. Our designs are based on users' needs and comfortable living, while respecting the environment and the best practices in sustainable construction.

The team of expert developers behind Lyhty boasts solid expertise and client knowledge that make the project financially viable and reliable. The developers have extensive experience in holiday homes, construction management, and different types of housing.







# Site plan

## Chalet A

**A1 & A2 downstairs | A3 & A4 upstairs**

3 rooms, open kitchen, bathroom and sauna, 59,1m<sup>2</sup>

## Chalet B

**B1 & B4 downstairs**

3 rooms, open kitchen, bathroom and sauna, 59,1m<sup>2</sup>

**B2&B3 Loft, two-storey**

2 rooms, open kitchen, bathroom and sauna, 38,2 m<sup>2</sup>

**B5 & B6 upstairs**

3 rooms, open kitchen, bathroom and sauna, 59,1m<sup>2</sup>

## Chalet C

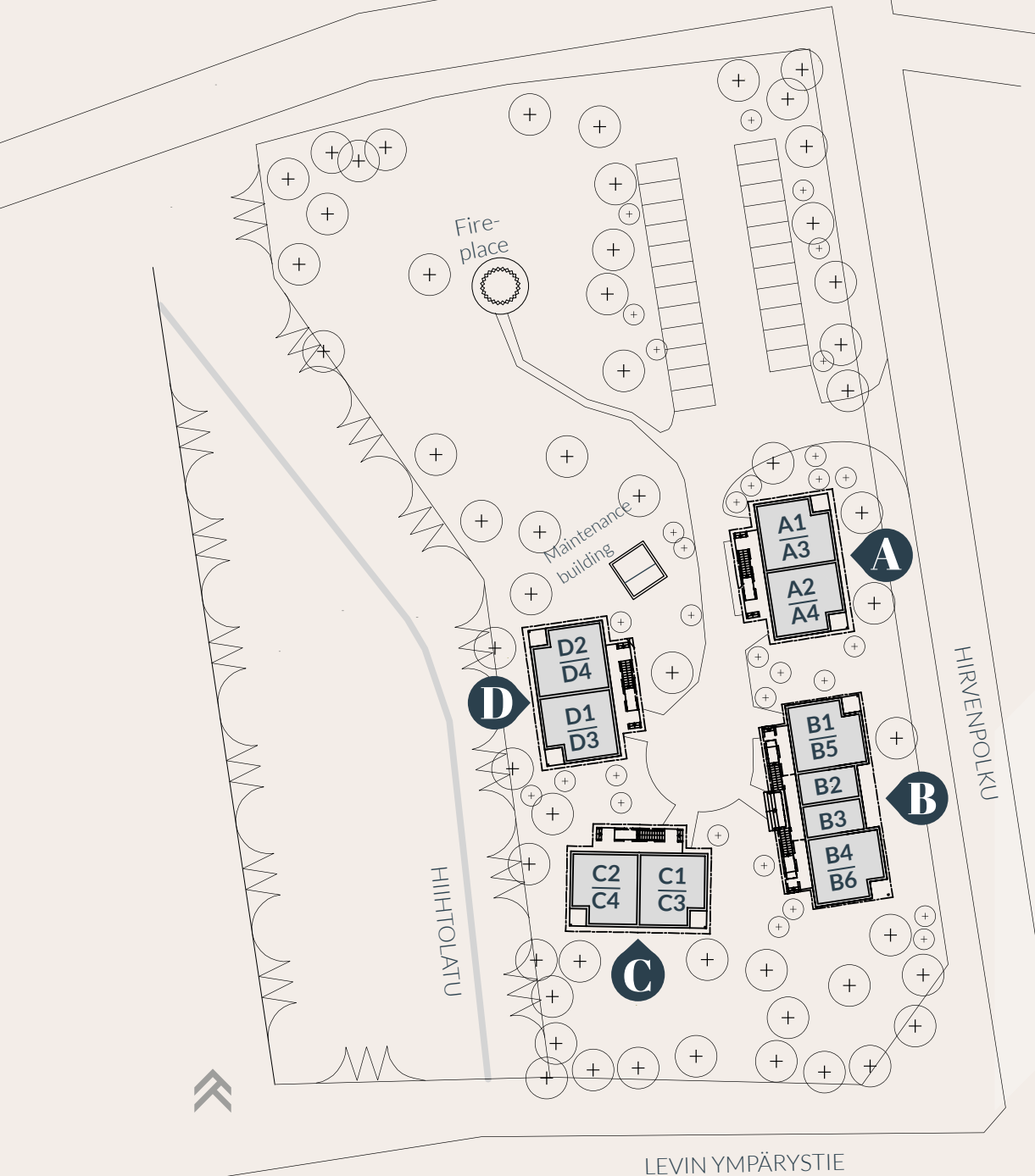
**C1 & C2 downstairs | C3 & C4 upstairs**

3 rooms, open kitchen, bathroom and sauna, 59,1m<sup>2</sup>

## Chalet D

**D1 & D2 downstairs | D3 & D4 upstairs**

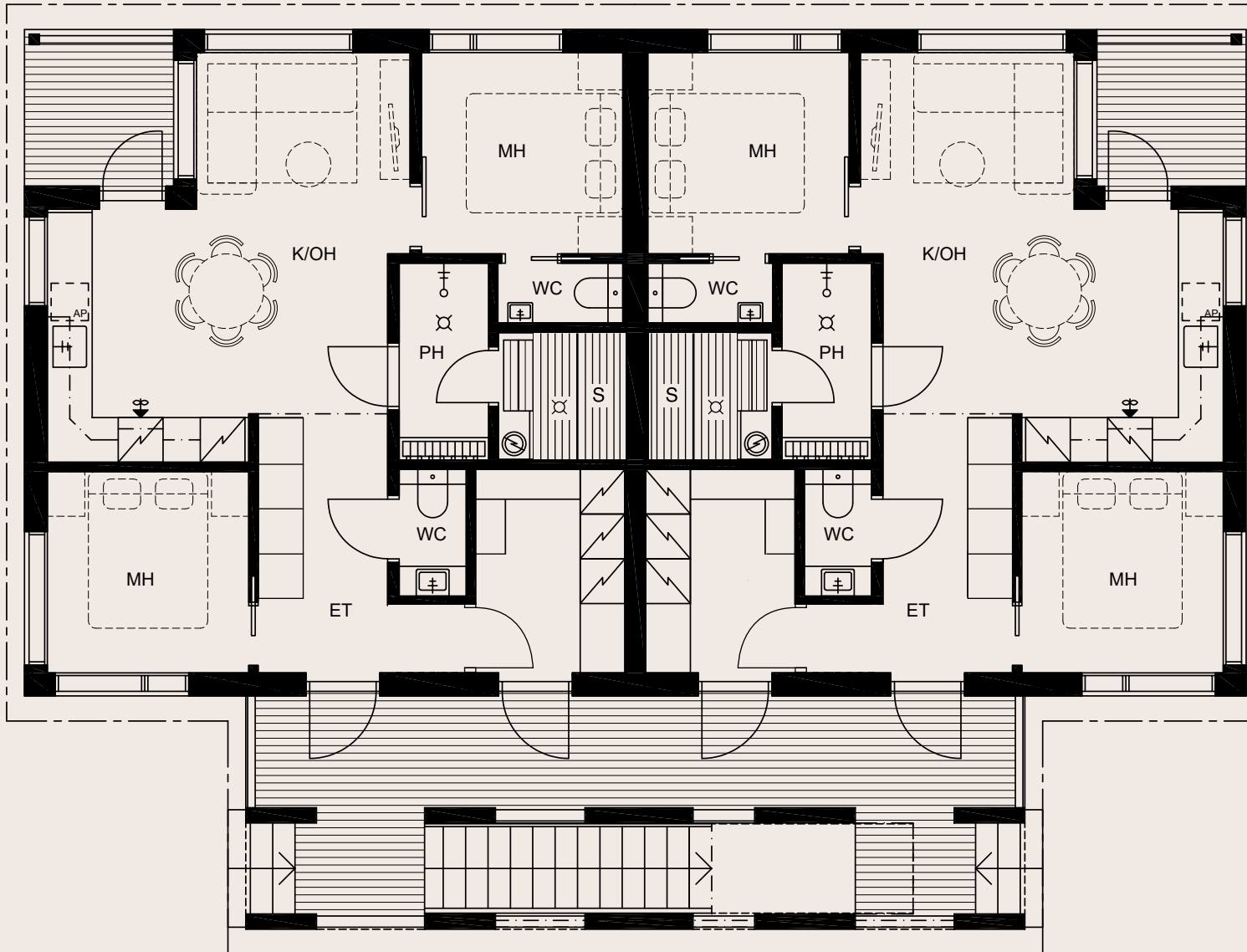
3 rooms, open kitchen, bathroom and sauna, 59,1m<sup>2</sup>





## A1 | Downstairs

## A2 | Downstairs



## CHALET A / A1 & 2

# 59,1 m<sup>2</sup>

3 rooms, open kitchen,  
bathroom and sauna

Accommodates 4–6 people

Views in three directions

Master bedroom with private toilet

Connection for washing machine  
and tumble dryer

Modern, fully equipped kitchen

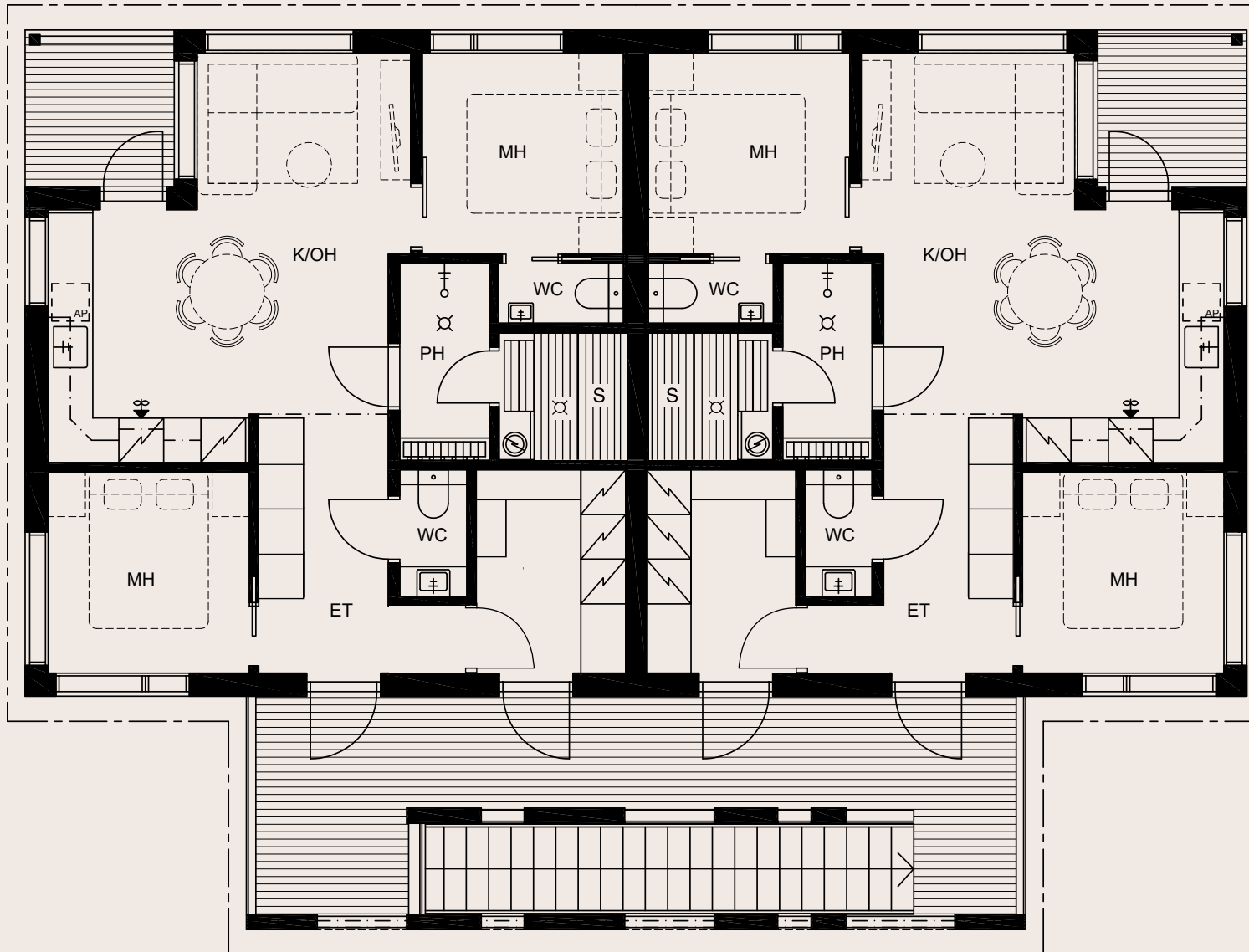
Apartment with terrace





## A3 | Upstairs

## A4 | Upstairs



## CHALET A / A3 & A4

# 59,1 m<sup>2</sup>

3 rooms, open kitchen,  
bathroom and sauna

Accommodates 4–6 people

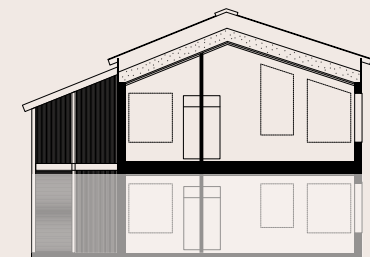
Views in three directions

Master bedroom with private toilet

Connection for washing machine  
and tumble dryer

Modern, fully equipped kitchen

Apartment with balcony





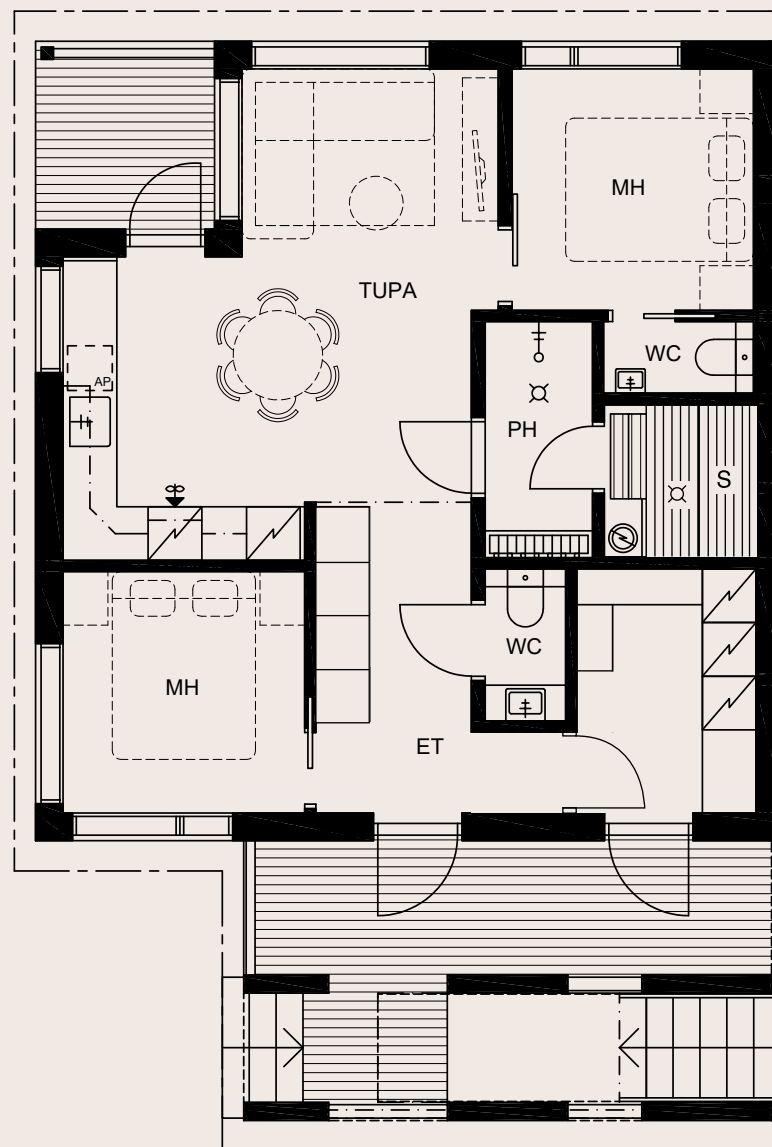
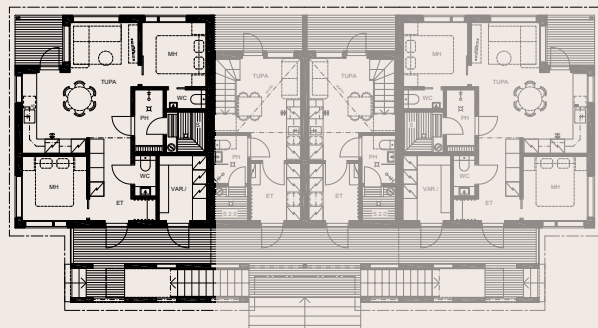
B1

B2

B3

B4

B1 | Downstairs



CHALET B / B1

59,1 m<sup>2</sup>

3 rooms, open kitchen,  
bathroom and sauna

Accommodates 4–6 people

Views in three directions

Master bedroom with private toilet

Connection for washing machine  
and tumble dryer

Modern, fully equipped kitchen

Apartment with terrace



**B1**

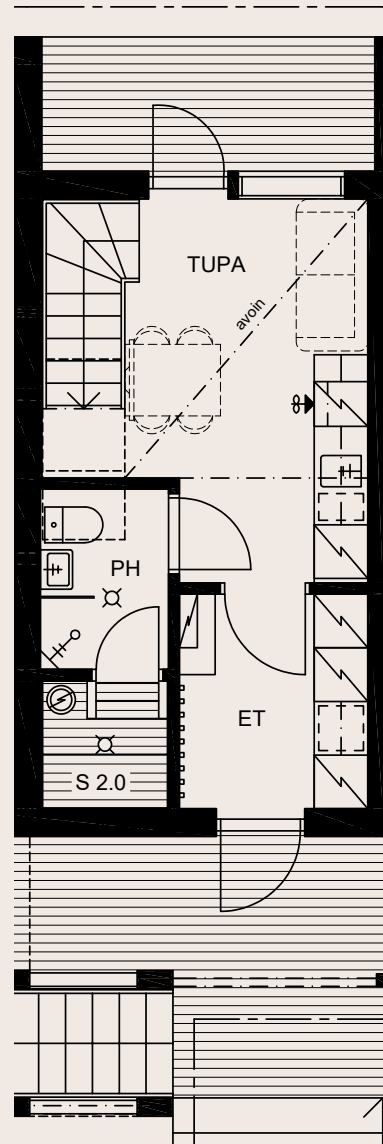
**B2**

**B3**

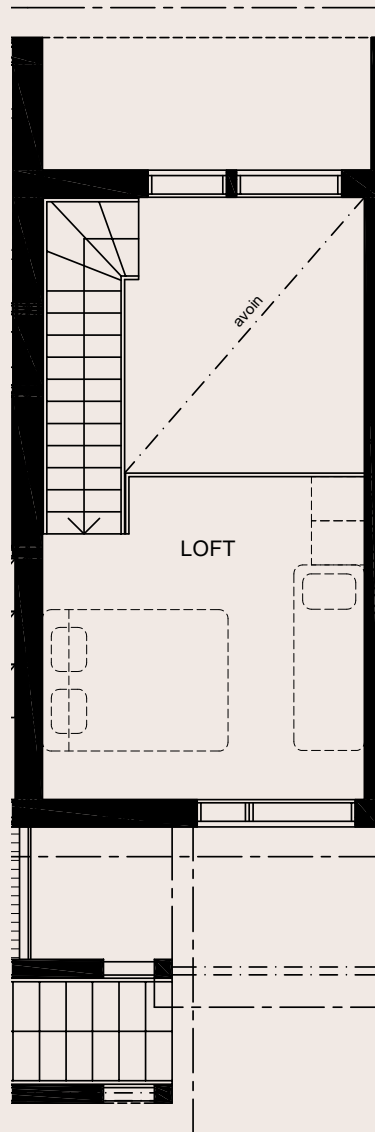
**B4**



**B2 | Downstairs**



**B2 | Upstairs**



CHALET B / B2

**38,2 m<sup>2</sup>**

2 rooms, open kitchen,  
bathroom and sauna

Accommodates 2–4 people

Views in two directions

A real space miracle

The large internal volume  
creates a sense of space

Drying cabinet

Apartment with terrace



B1

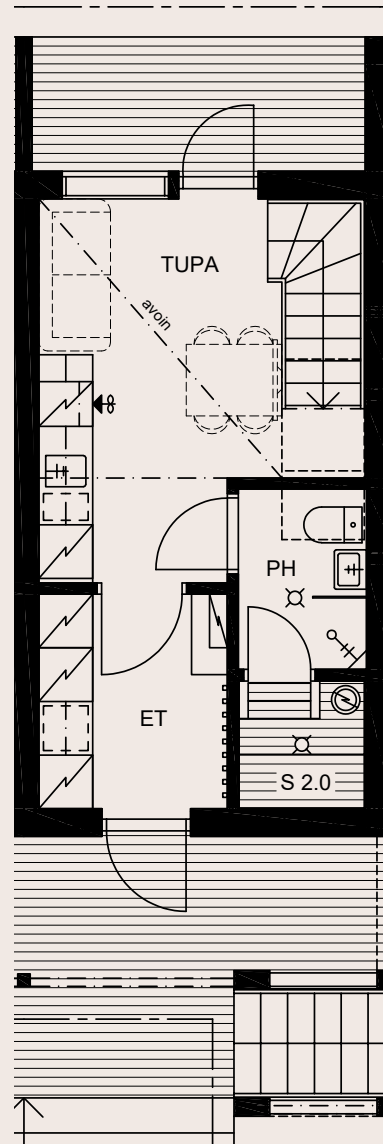
B2

B3

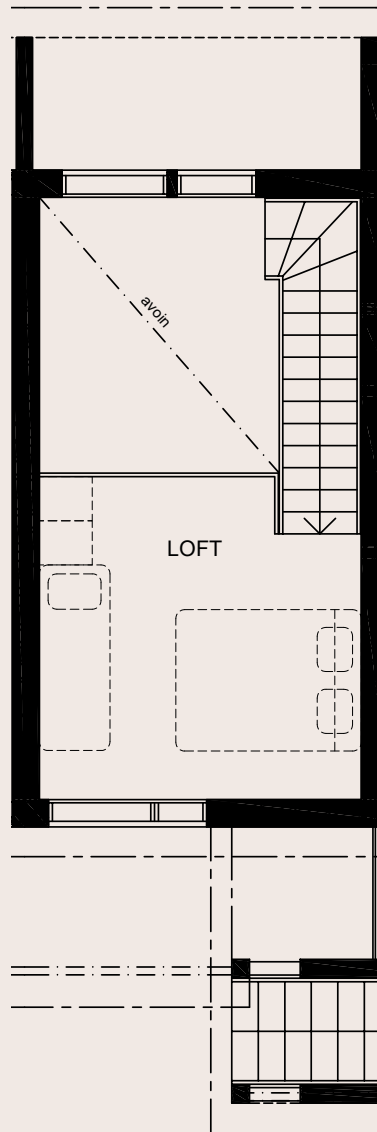
B4



B3 | Downstairs



B3 | Upstairs



CHALET B / B3

**38,2 m<sup>2</sup>**

2 rooms, open kitchen,  
bathroom and sauna

Accommodates 2–4 people

Views in two directions

A real space miracle

The large internal volume  
creates a sense of space

Drying cabinet

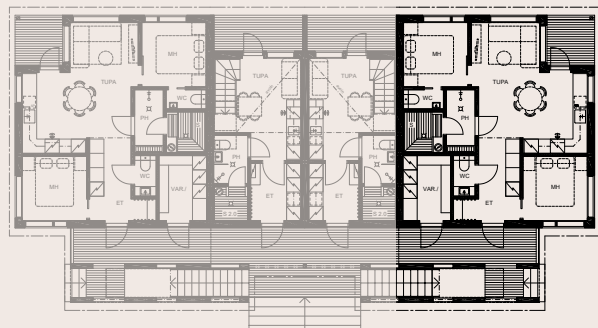
Apartment with terrace

**B1**

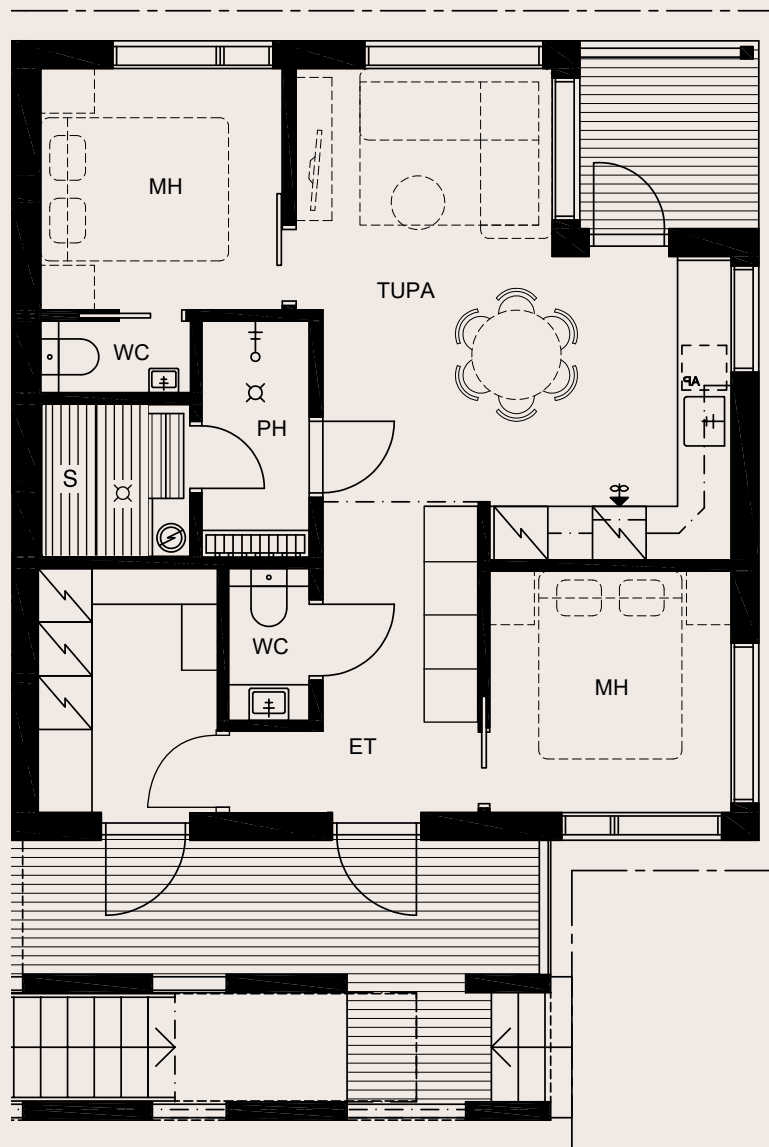
**B2**

**B3**

**B4**



**B4 | Downstairs**



CHALET B / B4

**59,1 m<sup>2</sup>**

3 rooms, open kitchen,  
bathroom and sauna

Accommodates 4–6 people

Views in three directions

Master bedroom with private toilet

Connection for washing machine  
and tumble dryer

Modern, fully equipped kitchen

Apartment with terrace





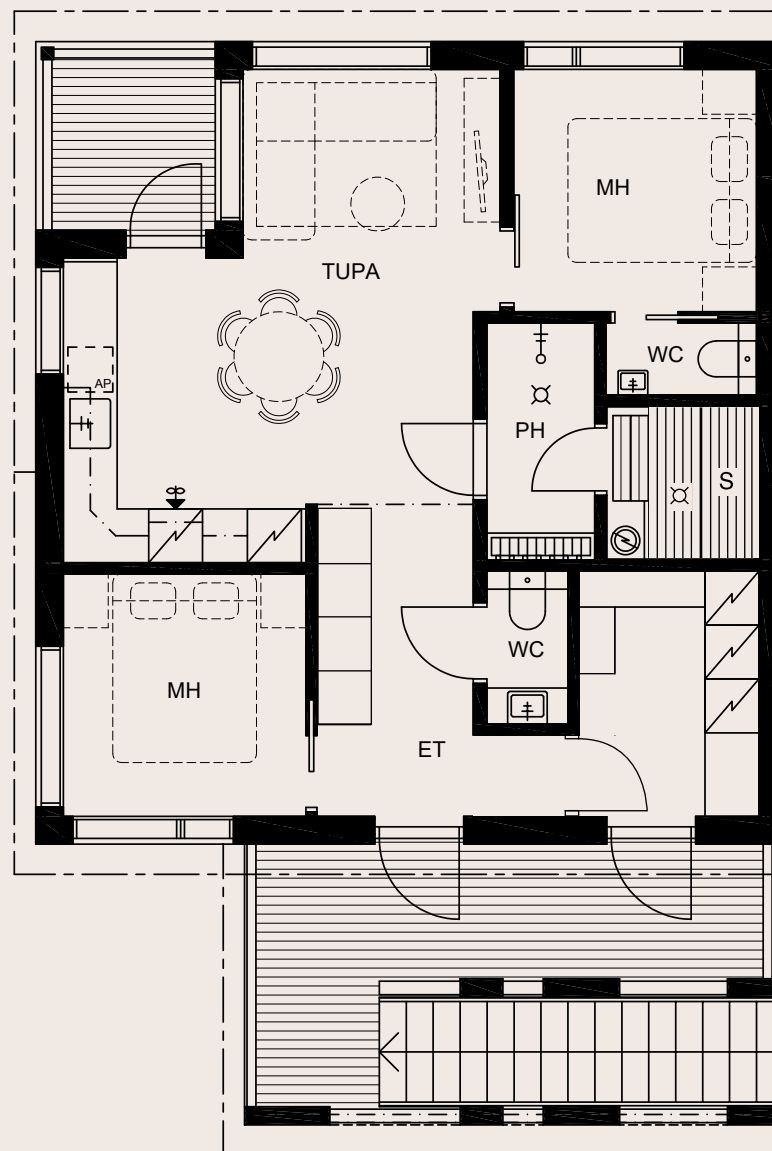
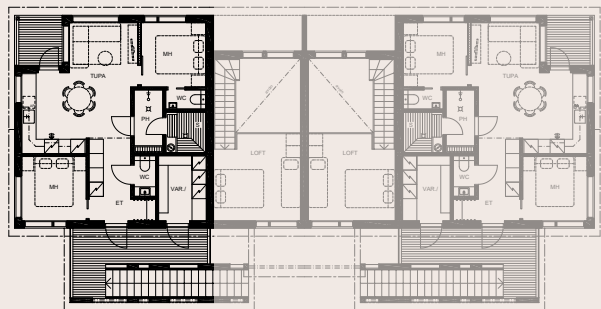
B5

B2

B3

B6

B5 | Upstairs



CHALET B / B5

59,1 m<sup>2</sup>

3 rooms, open kitchen,  
bathroom and sauna

Accommodates 4–6 people

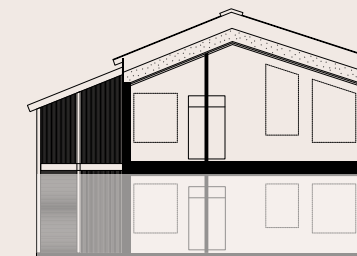
Views in three directions

Master bedroom with private toilet

Connection for washing machine  
and tumble dryer

Modern, fully equipped kitchen

Apartment with balcony



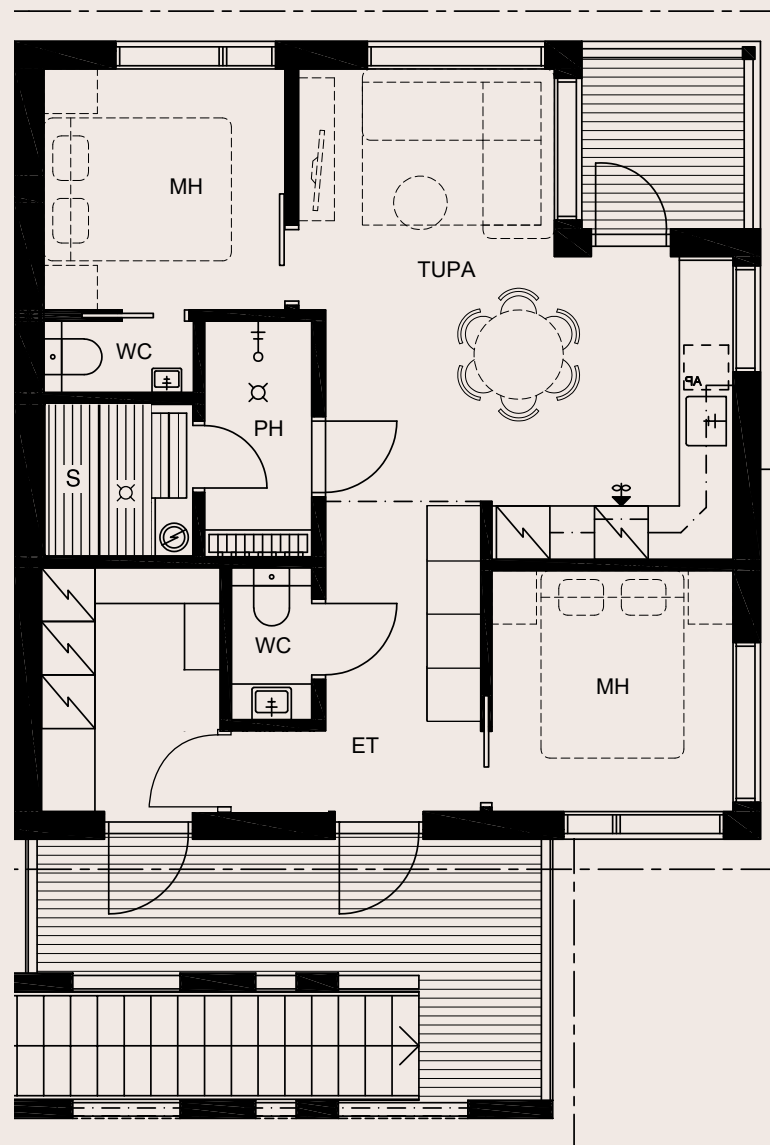
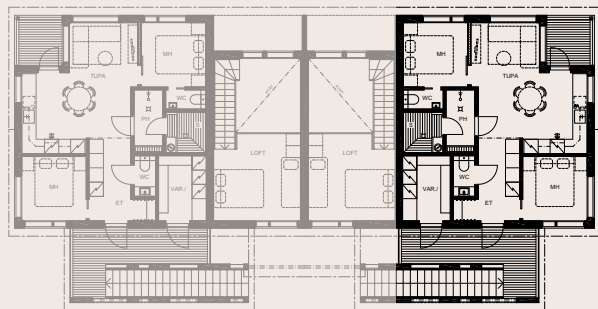
B5

B2

B3

B6

B6 | Upstairs



CHALET B / B6

**59,1 m<sup>2</sup>**

3 rooms, open kitchen,  
bathroom and sauna

Accommodates 4–6 people

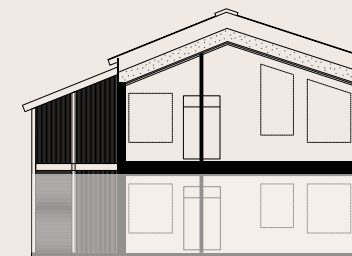
Views in three directions

Master bedroom with private toilet

Connection for washing machine  
and tumble dryer

Modern, fully equipped kitchen

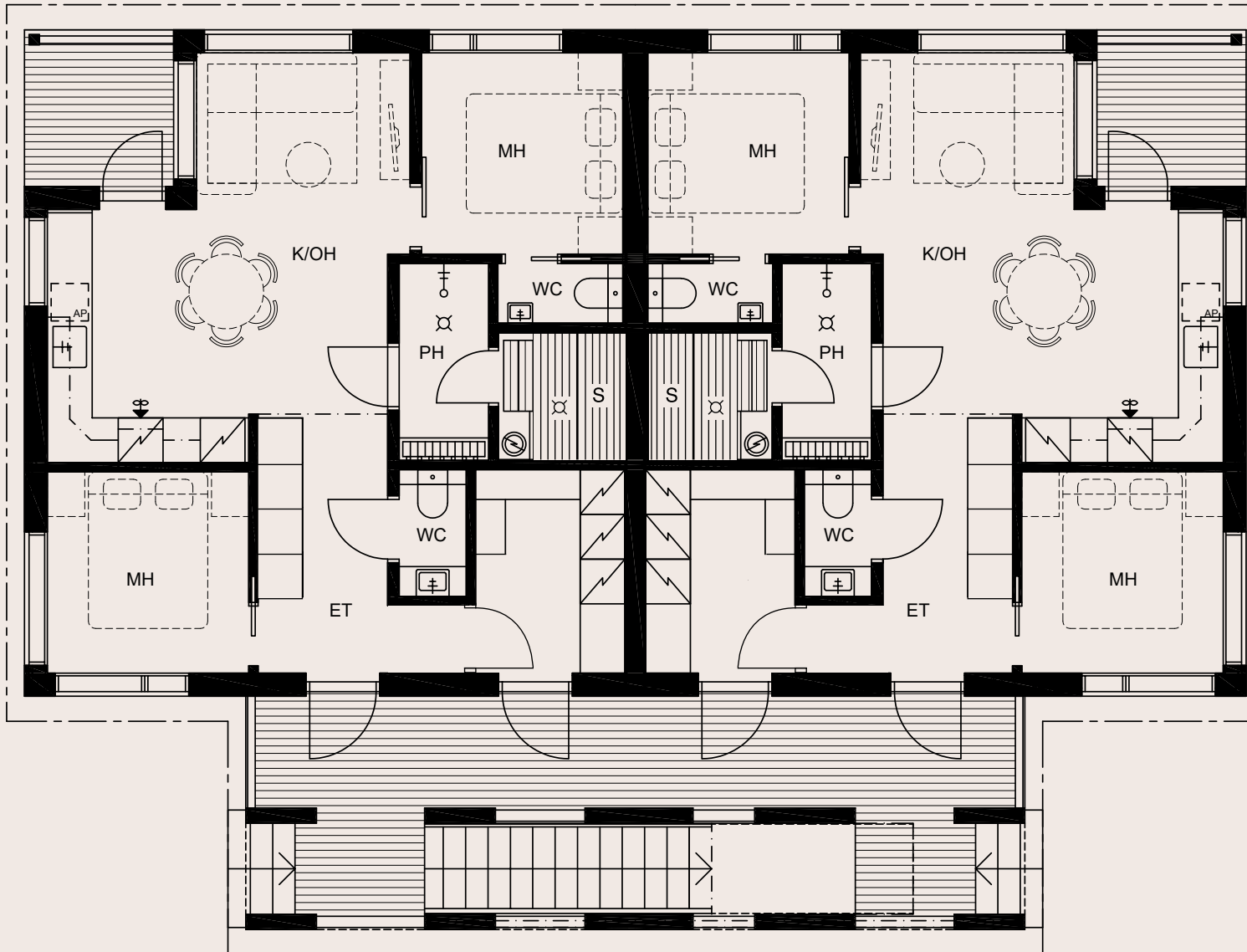
Apartment with balcony





## C1 | Downstairs

## C2 | Downstairs



### CHALET C / C1 & C2

# 59,1 m<sup>2</sup>

3 rooms, open kitchen,  
bathroom and sauna

Accommodates 4–6 people

Views in three directions

Master bedroom with private toilet

Connection for washing machine  
and tumble dryer

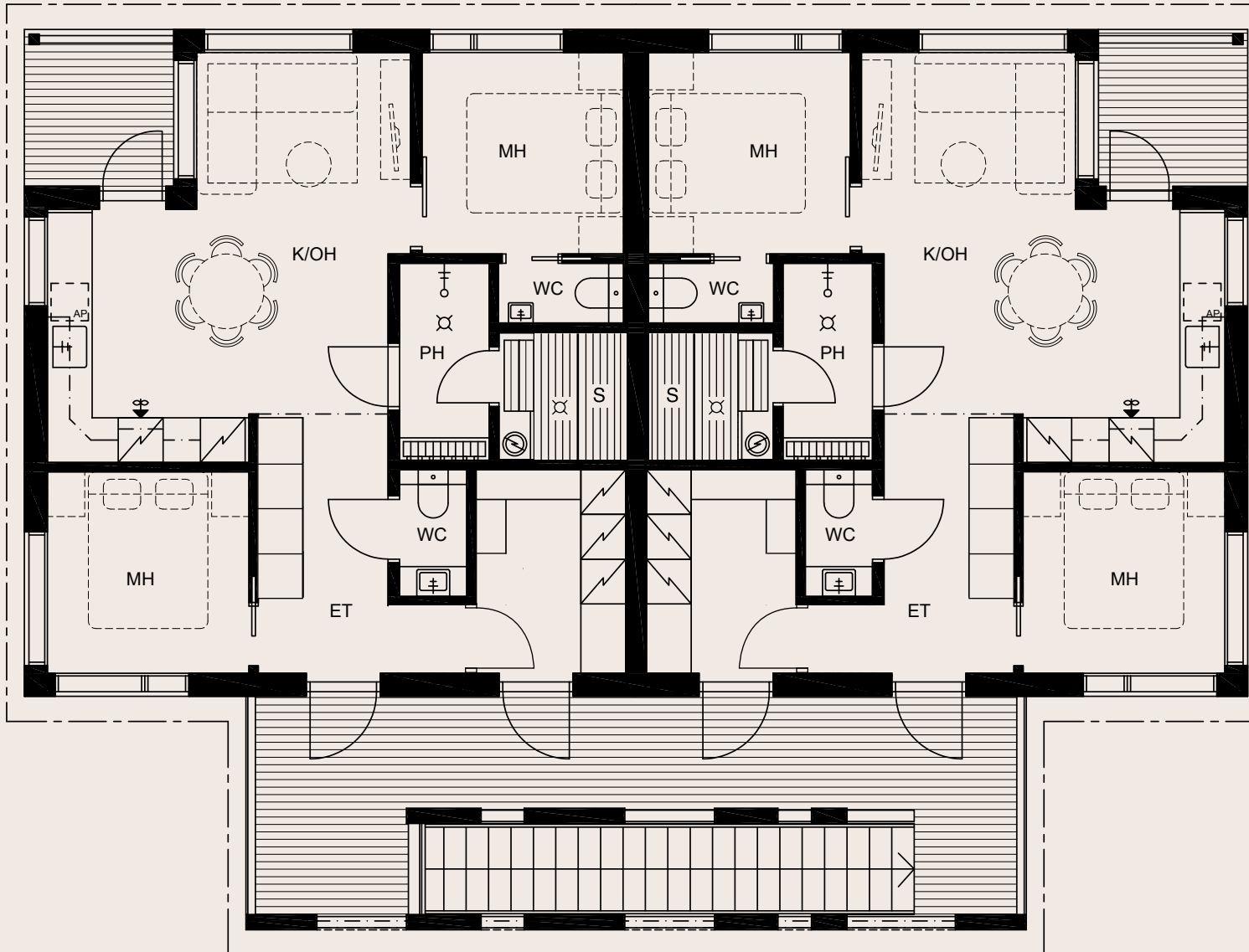
Modern, fully equipped kitchen

Apartment with terrace



### C3 | Upstairs

### C4 | Upstairs



### CHALET C / C3 & C4

**59,1 m<sup>2</sup>**

3 rooms, open kitchen,  
bathroom and sauna

Accommodates 4–6 people

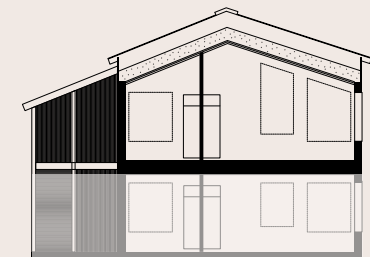
Views in three directions

Master bedroom with private toilet

Connection for washing machine  
and tumble dryer

Modern, fully equipped kitchen

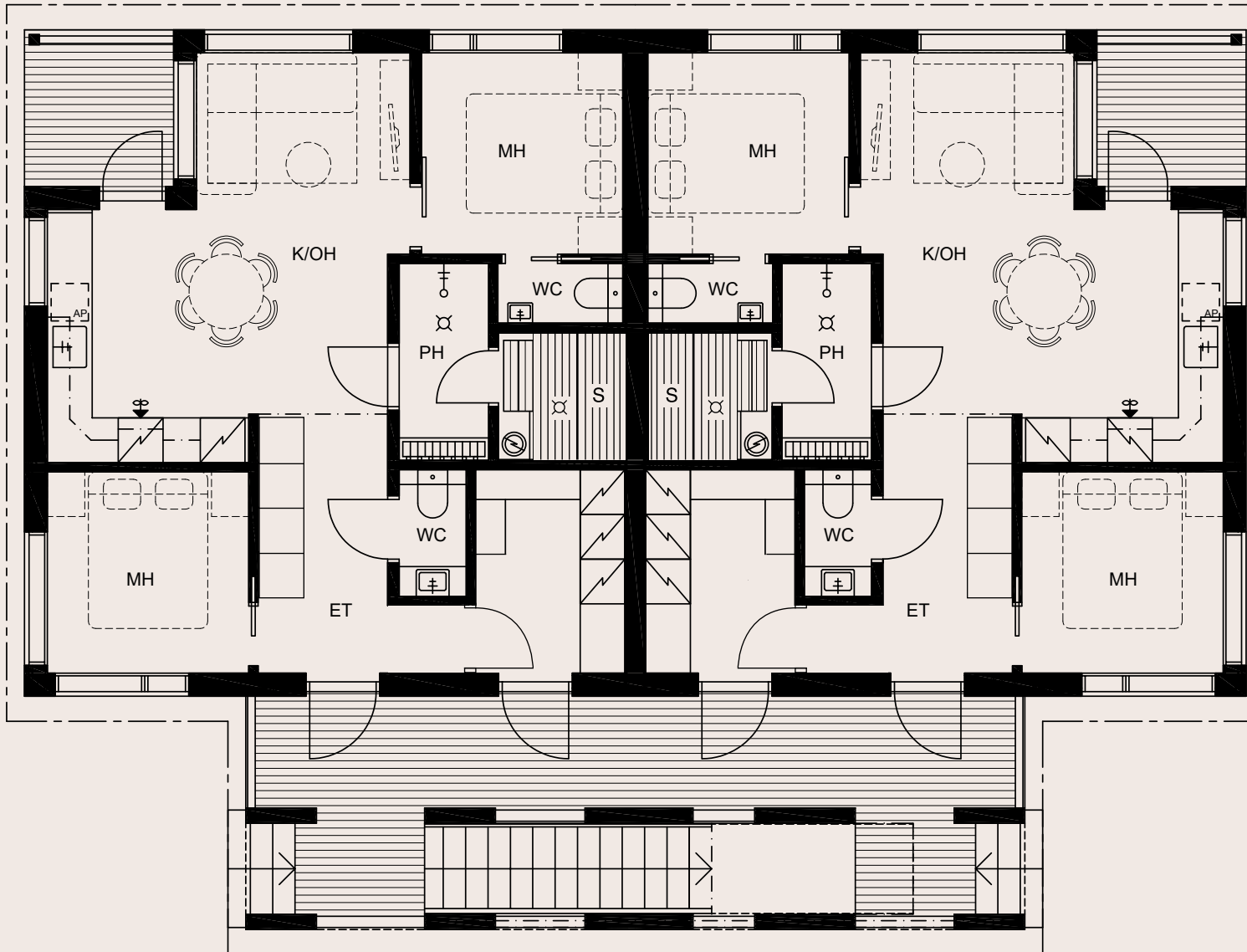
Apartment with balcony





## D1 | Downstairs

## D2 | Downstairs



## CHALET D / D1 & D2

# 59,1 m<sup>2</sup>

3 rooms, open kitchen,  
bathroom and sauna

Accommodates 4–6 people

Views in three directions

Master bedroom with private toilet

Connection for washing machine  
and tumble dryer

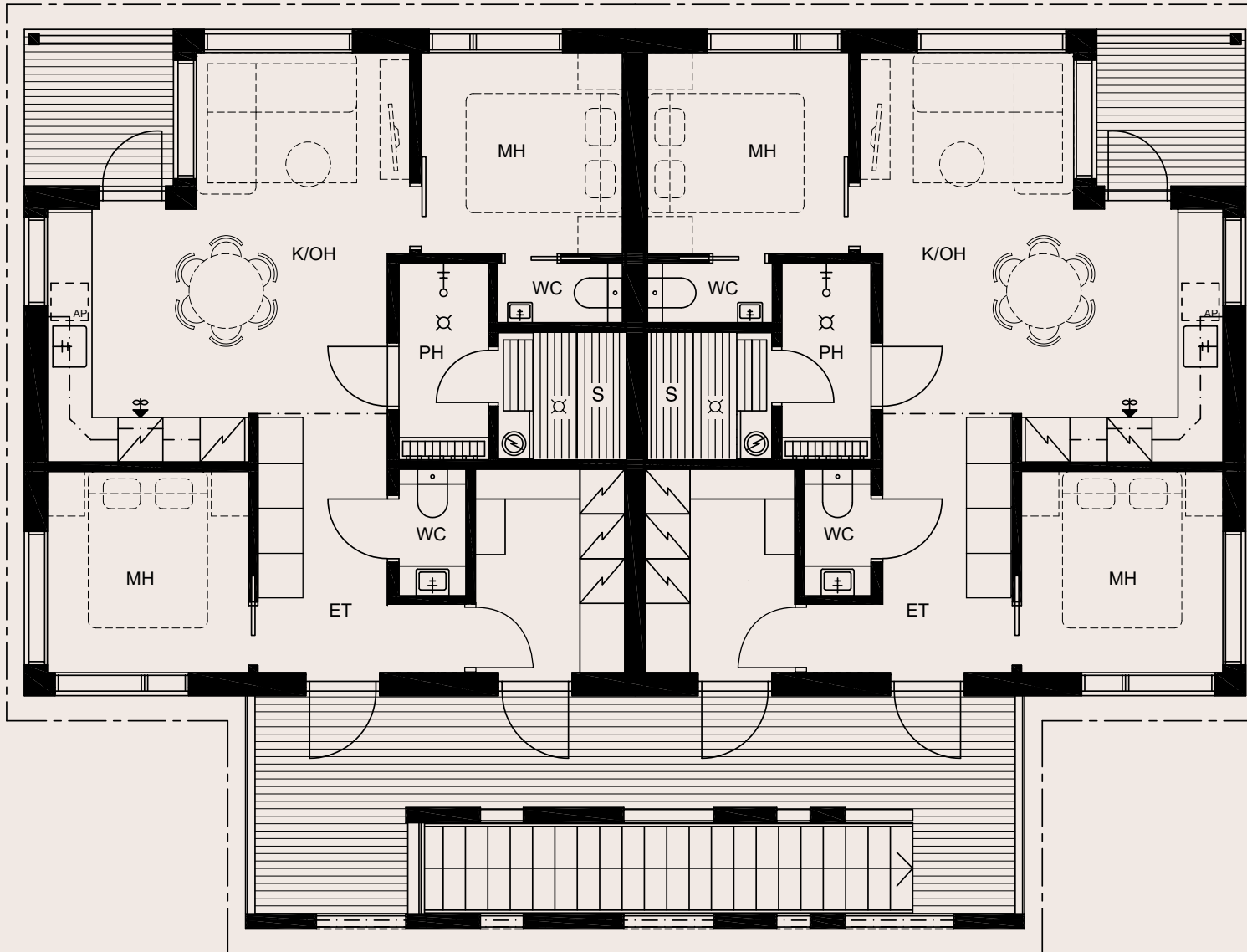
Modern, fully equipped kitchen

Apartment with terrace



## D3 | Upstairs

## D4 | Upstairs



### CHALET D / D3 & D4

# 59,1 m<sup>2</sup>

3 rooms, open kitchen,  
bathroom and sauna

Accommodates 4–6 people

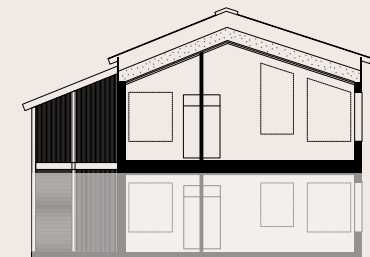
Views in three directions

Master bedroom with private toilet

Connection for washing machine  
and tumble dryer

Modern, fully equipped kitchen

Apartment with balcony







# High quality details and materials

Levin Lyhty's ski chalets are high-quality log houses by PolarHouse, manufactured in the Finnish Sea Lapland region. The modern chalets have a warm and energy-saving thermal log structure. The ecological and energy-efficient thermal log construction will ensure comfort, environmental sustainability, and cost-effectiveness for decades to come.

The diverse natural materials and harmonious shades of the Levin Lyhty apartments pay homage to the magical and unique nature of Lapland and its seasonal colors.

The walls of the apartments are finished in a beautifully warm Matsutake shade, creating an inviting, cozy atmosphere. The kitchen cabinets have a dark grey Anthracite shade, which provides a bold contrast to the kitchen space.

The flooring materials in the common areas provide both elegance and functionality. The 600 mm × 600 mm heated tiles used in these spaces are resistant to snow and dampness but not slippery when walked on with ski boots.

The bathrooms and toilets use the same luxurious tiles, echoing the warm color scheme of the entire apartment. The sophisticated toilets are equipped with a wall-mounted toilet seat and a large, back-lit mirror. The basin taps and shower have an elegant black color, and the sauna benches, walls, and ceilings are made of stunning black alder wood.

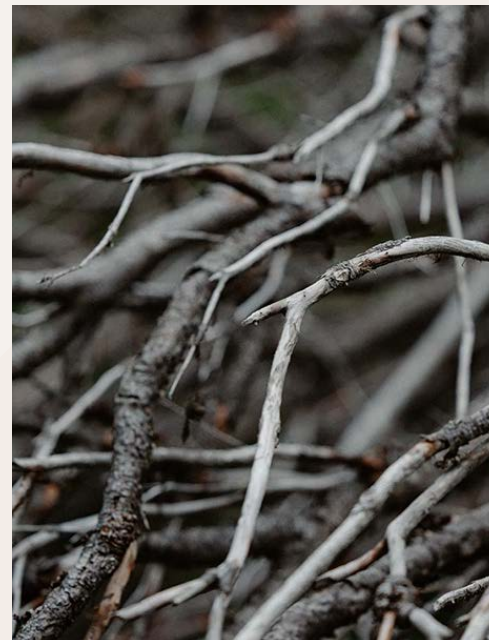
The colors, atmosphere, and usability of the apartments are designed with comfort in mind. Master bedrooms with en suite bathrooms and views in three different directions in bigger apartments are those details that make Levin Lyhty a unique and exceptional property in its price range.







Levin Lyhty, apartment A1, visualisation sketch



Levin Lyhty, bathroom, visualisation sketch





# Levin Lyhty, price list

M²	FLOOR	APT NUMBER	DESCRIPTION	NET SALES PRICE	APARTMENT DEPT	DEPT-FREE PRICE	PRICE / M²*	MAINTENANCE FEE / KK	ESTIMATED FINANCING FEE / KK*
59,1 m²	1	A1	3H+K+S	172 500 €	167 500 €	340 000 €	5 753 €	266 €	1 055 €
59,1 m²	1	A2	3H+K+S	172 500 €	167 500 €	340 000 €	5 753 €	266 €	1 055 €
59,1 m²	2	A3	3H+K+S	177 500 €	167 500 €	345 000 €	5 838 €	266 €	1 055 €
59,1 m²	2	A4	3H+K+S	177 500 €	167 500 €	345 000 €	5 753 €	266 €	1 055 €
59,1 m²	1	B1	3H+K+S	172 500 €	167 500 €	340 000 €	5 753 €	266 €	1 055 €
38,2 m²	1-2	B2 (Loft)	2H+K+S	130 000 €	115 000 €	245 000 €	6 414€	172 €	742 €
38,2 m²	1-2	B3 (Loft)	2H+K+S	130 000 €	115 000 €	245 000 €	6 414€	172 €	742 €
59,1 m²	1	B4	3H+K+S	172 500 €	167 500 €	340 000 €	5 753 €	266 €	1 055 €
59,1 m²	2	B5	3H+K+S	177 500 €	167 500 €	345 000 €	5 838 €	266 €	1 055 €
59,1 m²	2	B6	3H+K+S	177 500 €	167 500 €	345 000 €	5 838 €	266 €	1 055 €
Lyhty II (C ja D HOUSES)									
59,1 m²	1	C1	3H+K+S	182 500 €	167 500 €	350 000 €	5 922 €	266 €	1064 €
59,1 m²	1	C2	3H+K+S	182 500 €	167 500 €	350 000 €	5 922 €	266 €	1064 €
59,1 m²	2	C3	3H+K+S	192 500 €	167 500 €	360 000 €	6 091 €	266 €	1064 €
59,1 m²	2	C4	3H+K+S	192 500 €	167 500 €	360 000 €	6 091 €	266 €	1064 €
59,1 m²	1	D1	3H+K+S	182 500 €	167 500 €	350 000 €	5 922 €	266 €	1064 €
59,1 m²	1	D2	3H+K+S	182 500 €	167 500 €	350 000 €	5 922 €	266 €	1064 €
59,1 m²	2	D3	3H+K+S	192 500 €	167 500 €	360 000 €	6 091 €	266 €	1064 €
59,1 m²	2	D4	3H+K+S	192 500 €	167 500 €	360 000 €	6 091 €	266 €	1064 €



# Book your dream today!



Joris den Hartog

Tel: +31 613 607 830

[info@woodenhomefromlapland.com](mailto:info@woodenhomefromlapland.com)

